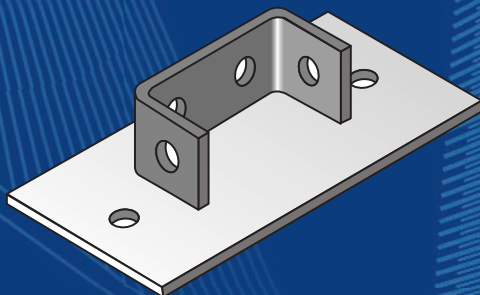
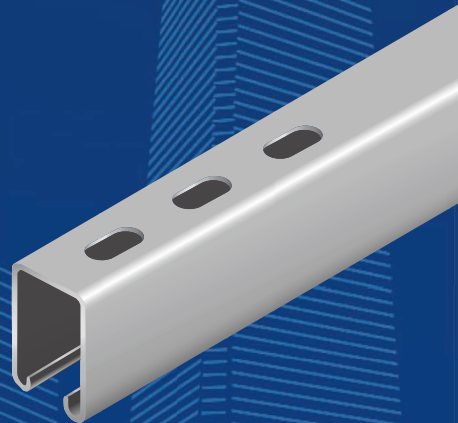
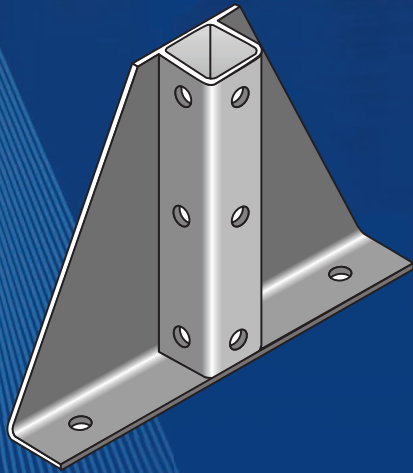
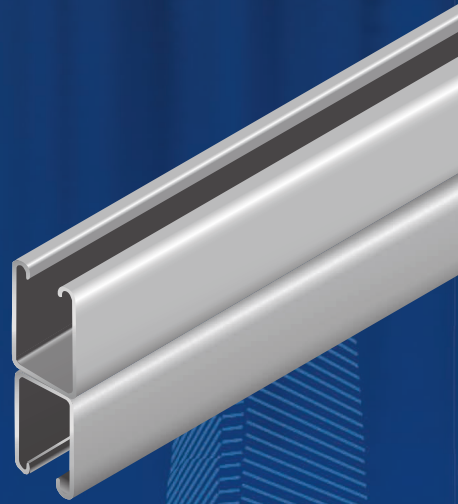


# JAM Channel & Fittings



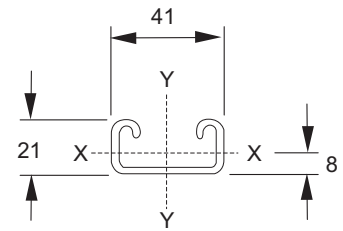
<b>Steel</b>	
Material Standard:	BS 1449 Part2:1983
Specification:	BS 6946:1988
Finishing:	hot dip galvanized to ISO 1461:2009

**Plain Channel**

DR21

**Item No.**

- 4005041213 (3 meters long) [1.5mm thickness]
- 4005041216 (6 meters long)
- 4005341213 (3 meters long) [2.5mm thickness]



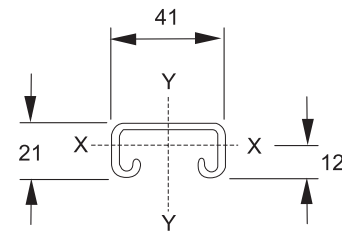
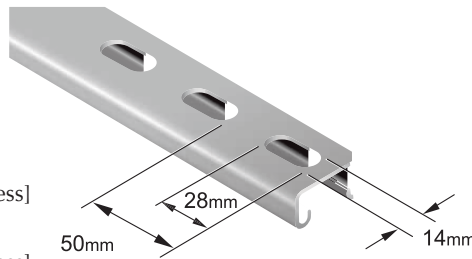
Span or column unsupported Height in mm	Uniform Load at 175 N/mm <sup>2</sup> Stress.kg	Deflection in mm at 175 N/mm <sup>2</sup>	Uniform Load at Max. Deflec. Of 1/200th. Span. Kg	Uniform load at Max. Deflec. Of 1/360th. Span. Kg	Max. Load of column loaded @ Centroid kg	Max. Load of column loaded @ slot face kg
500	276	1.81	-	212	3379	995
750	184	4.07	169	94	2198	859
1000	138	7.24	95	53	1353	690
1250	110	11.32	61	33	896	548
1500	92	16.30	42	23	(634)	(437)
2000	69	28.99	23	-	-	-

**Slotted Channel**

DR21S

**Item No.**

- 4003041213 (3 meters long) [2.5mm thickness]
- 4003041216 (6 meters long)
- 4003141213 (3 meters long) [1.4mm thickness]



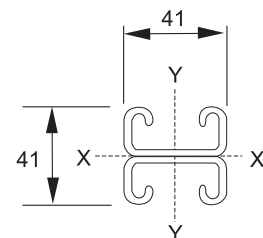
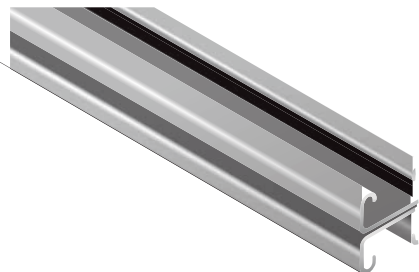
Span or column unsupported Height in mm	Uniform Load at 175 N/mm <sup>2</sup> Stress.kg	Deflection in mm at 175 N/mm <sup>2</sup>	Uniform Load at Max. Deflec. Of 1/200th. Span. Kg	Uniform load at Max. Deflec. Of 1/360th. Span. Kg	Max. Load of column loaded @ Centroid kg	Max. Load of column loaded @ slot face kg
500	254	2.01	-	174	-	-
750	169	4.54	139	77	-	-
1000	127	8.07	78	43	-	-
1250	101	12.61	50	27	-	-
1500	84	18.17	34	-	-	-
2000	63	32.30	-	-	-	-

**Combination Channel**

DR21D

**Item No.**

- 4008041213 (3 meters long)
- 4008041216 (6 meters long)



Span or column unsupported Height in mm	Uniform Load at 175 N/mm <sup>2</sup> Stress.kg	Deflection in mm at 175 N/mm <sup>2</sup>	Uniform Load at Max. Deflec. Of 1/200th. Span. Kg	Uniform load at Max. Deflec. Of 1/360th. Span. Kg	Max. Load of column loaded @ Centroid kg	Max. Load of column loaded @ slot face kg
500	779	1.07	-	-	7740	1809
1000	389	4.30	-	251	5367	1639
1500	259	9.68	201	111	2838	1289
2000	194	17.21	113	62	(1668)	(977)
2500	155	26.90	72	40	(1090)	(745)
3000	129	38.73	50	27	-	-

Grade 304 & 316 Stainless Steel and special length available on request

<b>Steel</b>	
Material Standard:	BS 1449 Part2:1983
Specification:	BS 6946:1988
Finishing:	hot dip galvanized to ISO 1461:2009

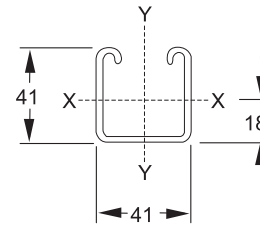
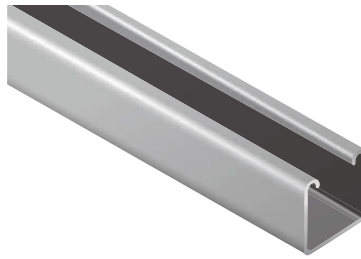
**Plain Channel**

DR41

Item No.

4004041413 (3 meters long)

4004041416 (6 meters long)



Span or column unsupported Height in mm	Uniform Load at 175 N/mm <sup>2</sup> Stress.kg	Deflection in mm at 175 N/mm <sup>2</sup>	Uniform Load at Max. Deflec. Of 1/200th. Span. Kg	Uniform load at Max. Deflec. Of 1/360th. Span. Kg	Max. Load of column loaded @ Centroid kg	Max. Load of column loaded @ slot face kg
500	884	0.95	-	-	5379	1650
1000	442	3.82	-	321	3373	1395
1500	294	8.60	257	142	2020	1093
2000	221	15.29	144	80	1395	879
2500	176	23.89	92	51	1044	725
3000	147	34.40	64	35	(816)	(607)

**Slotted Channel**

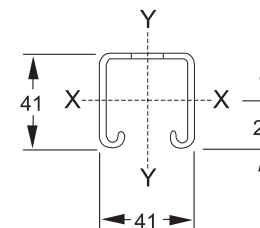
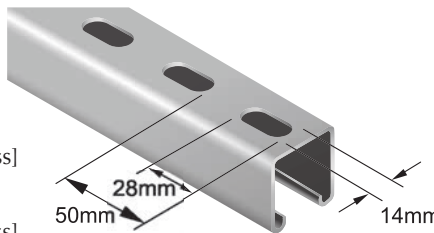
DR41S

Item No.

4002041413 (3 meters long) [2.5mm thickness]

4002041416 (6 meters long)

4002141413 (6 meters long) [1.5mm thickness]



Span or column unsupported Height in mm	Uniform Load at 175 N/mm <sup>2</sup> Stress.kg	Deflection in mm at 175 N/mm <sup>2</sup>	Uniform Load at Max. Deflec. Of 1/200th. Span. Kg	Uniform load at Max. Deflec. Of 1/360th. Span. Kg	Max. Load of column loaded @ Centroid kg	Max. Load of column loaded @ slot face kg
500	819	1.05	-	-	5100	1635
1000	409	4.18	-	271	3284	1389
1500	273	9.41	217	120	1899	1062
2000	204	16.73	122	67	1297	843
2500	163	26.15	78	43	970	691
3000	136	37.65	54	30	(761)	(578)

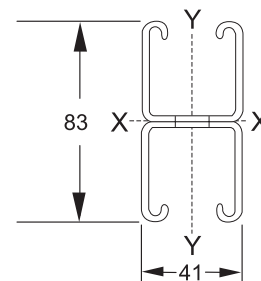
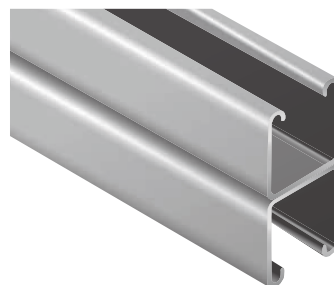
**Combination Channel**

DR41D

Item No.

4009041413 (3 meters long)

4009041416 (6 meters long)



Span or column unsupported Height in mm	Uniform Load at 175 N/mm <sup>2</sup> Stress.kg	Deflection in mm at 175 N/mm <sup>2</sup>	Uniform Load at Max. Deflec. Of 1/200th. Span. Kg	Uniform load at Max. Deflec. Of 1/360th. Span. Kg	Max. Load of column loaded @ Centroid kg	Max. Load of column loaded @ slot face kg
500	-	-	-	-	11682	2864
1000	1253	2.15	-	-	10451	2783
1500	835	4.84	-	718	7790	2551
2000	626	8.61	-	404	5068	2170
2500	501	13.45	465	258	3410	1796
3000	417	19.37	323	179	(2427)	(1480)

Grade 304 & 316 Stainless Steel and special length available on request

<b>Steel</b>	
Material Standard:	BS 1449 Part2:1983
Specification:	BS 6946:1988
Finishing:	hot dip galvanized to ISO 1461:2009

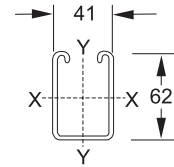
**Plain Channel**

DR62

**Item No.**

4007041623 (3 meters long)

4007041626 (6 meters long)



Span or column unsupported Height in mm	Uniform Load at 167 N/mm <sup>2</sup> Stress.kg	Deflection in mm at 167 N/mm <sup>2</sup>	Uniform Load at Max. Deflec. Of 1/200th. Span. Kg	Uniform load at Max. Deflec. Of 1/360th. Span. Kg	Max. Load of column loaded @ Centroid kg	Max. Load of column loaded @ slot face kg
500	-	-	-	-	7050	2095
1000	816	2.49	-	-	3063	1511
1500	544	5.60	-	-	1570	1028
2000	408	9.97	-	227	1017	758
2500	326	15.58	261	145	743	595
3000	272	22.43	181	101	581	486

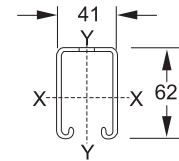
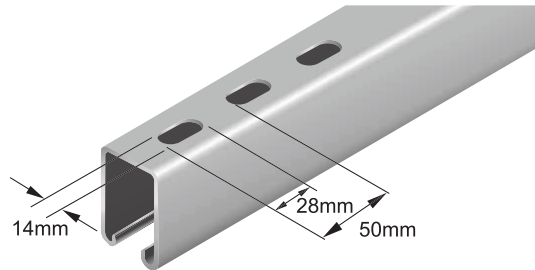
**Slotted Channel**

DR62S

**Item No.**

4006041623 (3 meters long)

4006041626 (6 meters long)



Span or column unsupported Height in mm	Uniform Load at 167 N/mm <sup>2</sup> Stress.kg	Deflection in mm at 167 N/mm <sup>2</sup>	Uniform Load at Max. Deflec. Of 1/200th. Span. Kg	Uniform load at Max. Deflec. Of 1/360th. Span. Kg	Max. Load of column loaded @ Centroid kg	Max. Load of column loaded @ slot face kg
500	-	-	-	-	6564	2047
1000	759	2.67	-	-	3256	1554
1500	506	6.02	-	350	1674	1071
2000	379	10.70	354	196	1083	794
2500	303	16.73	226	126	792	626
3000	253	24.09	157	87	621	514

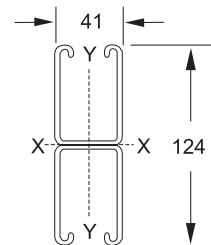
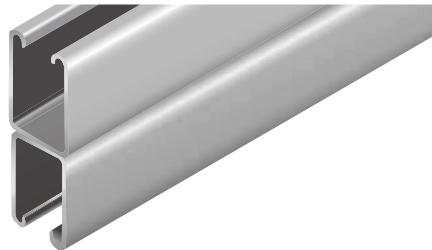
**Combination Channel**

DR62D

**Item No.**

4001041623 (3 meters long)

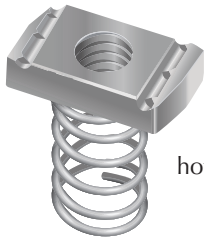
4001041626 (6 meters long)



Span or column unsupported Height in mm	Uniform Load at 167 N/mm <sup>2</sup> Stress.kg	Deflection in mm at 167 N/mm <sup>2</sup>	Uniform Load at Max. Deflec. Of 1/200th. Span. Kg	Uniform load at Max. Deflec. Of 1/360th. Span. Kg	Max. Load of column loaded @ Centroid kg	Max. Load of column loaded @ slot face kg
500	-	-	-	-	14440	3604
1000	-	-	-	-	13103	3515
1500	1605	3.07	-	-	10318	3277
2000	1204	5.47	-	-	6991	2847
2500	963	8.54	-	782	4766	2392
3000	802	12.30	-	543	3411	1994

Grade 304 & 316 Stainless Steel and special length available on request

## Channel Spring Nut



hot dip galvanized

Steel	Stainless Steel
-------	-----------------

Finishing (Item No.): hot dip galvanized to ISO 1461:2009	40419
zinc plated to ISO 4042:1999	40425
316 stainless steel	40422

Ordering example: hot dip galvanized M10 channel spring nut (item no.: 4041910000)

size	M5	M6	M8	M10	M12	M16
Item No.	05000	06000	08000	10000	12000	16000

Hot dip galvanized finishing from M6

### Strength of Channel Spring Nut used in Channel

SIZE	ALLOWABLE PULL-OUT (KG)	RESISTANCE TO SLIP (KG)	TORQUE (NM)
		DR41 & DR62	
M6	500	100	12
M8	600	240	28
M10	700	350	55
M12	900	680	95
M16	1200	750	125
		DR21	
M6	500	100	12
M8	600	240	28
M10	700	350	55
M12	700	400	60
M16	900	-	95

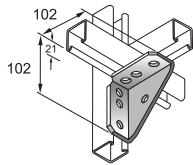
\* Above loading valid to galvanized steel and stainless steel

## Channel Bracket

ø14mm Hole, Thickness: 5mm

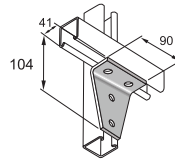
Angle Bracket with Plate (A05)

Item No.  
4054510014



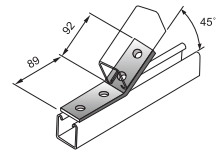
Wide Tee (A06) Angle Bracket

Item No.  
4054510015



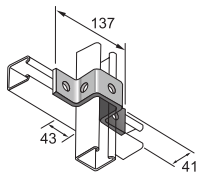
45 degree (A07) Angle Bracket

Item No.  
4054510016



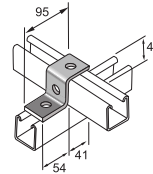
Off Set Tee (A08) Bracket

Item No.  
4054510017



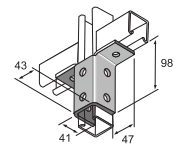
Single Cross (A09) Over Bracket

Item No.  
4054510018



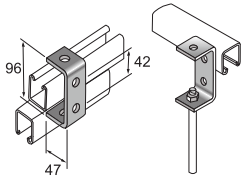
Transverse (A12) Support Bracket

Item No.  
4054510021



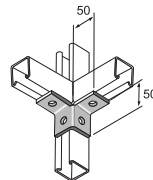
C Bracket (A10)

Item No.  
4054510019



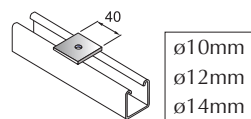
Transverse (A11) Corner Bracket

Item No.  
4054510020



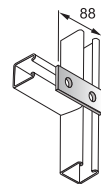
Square Washer (F03)

Item No.  
4054510000



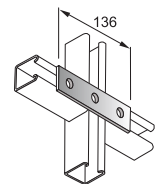
Rectangular Plate (2 holes) (F04)

Item No.  
4054510001



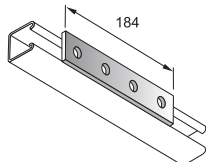
Rectangular Plate (3 holes) (F05)

Item No.  
4054510002



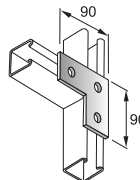
Rectangular Plate (4 holes) (F06)

Item No.  
4054510003



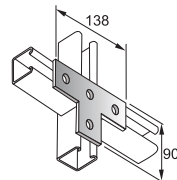
Flat Angle Bracket (F07)

Item No.  
4054510004



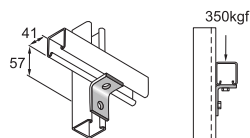
Tee Bracket (4 holes) (F08)

Item No.  
4054510005



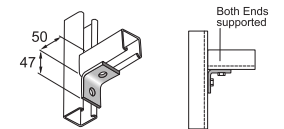
Angle Bracket (A01) (41x57 / 2 holes)

Item No.  
4054510006



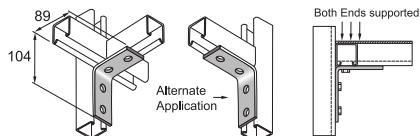
Angle Bracket (A02)

Item No.  
4054510007



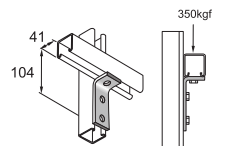
Angle Bracket (A04) (89x104 / 4 holes)

Item No.  
4054510009



Angle Bracket (3 holes) (A03)

Item No.  
4054510008



CA01

Item No.

40011

CA01

Item No.

40012

CA03

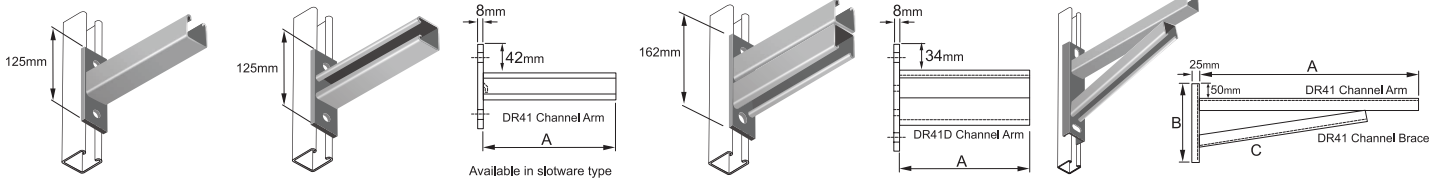
Item No.

40013

CA03

Item No.

40014



## Concrete Insert

Steel

Finishing:

hot dip galvanized to ISO 1461:2009

DR41C1

Item No.

4001500000

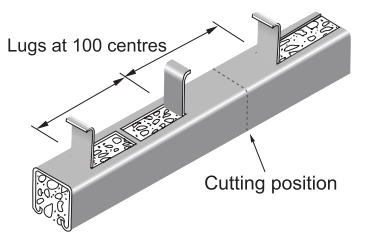
DR21C1

Item No.

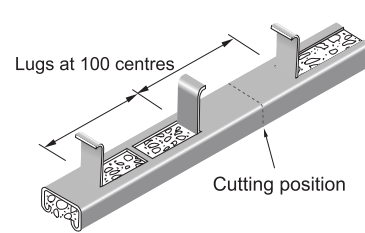
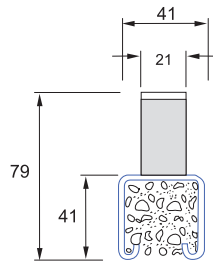
4001600000

(Manufactured to order)

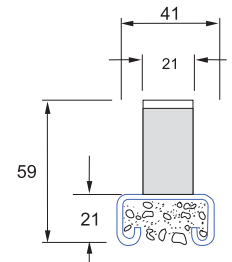
Grade 304 & 316 stainless steel and special length available on request



Inserts 300mm and over 900 kgf pull out per 300mm



Inserts 300mm and over 680 kgf pull out per 300mm



## Floor Bracket

Steel

Finishing:

hot dip galvanized to ISO 1461:2009

41x41 Single Base Plate (Light Duty) (No. B01)

Item No.

4054510010

41x41 Double Base Plate (Light Duty) (No. B02)

Item No.

4054510011

41x41 Single Base Plate (Heavy Duty) (No. B03)

Item No.

4054510012

41x41 Double Base Plate (Heavy Duty) (No. B04)

Item No.

4054510013

